



DV5500 DOCK STATION

GETTING STARTED

Thank you for purchasing the Mustek DV 5500 Dock Station.

We have included this convenient Getting Started to help with the basic operations.

HOW TO CONTACT US

Website:

<http://www.mustek.com>

Customer Service: (General Info)

Email: cservices@mustek.com

Fax: (949) 788-3670

Technical Support

Email: tsupport@mustek.com

Phone: (949) 788-3600

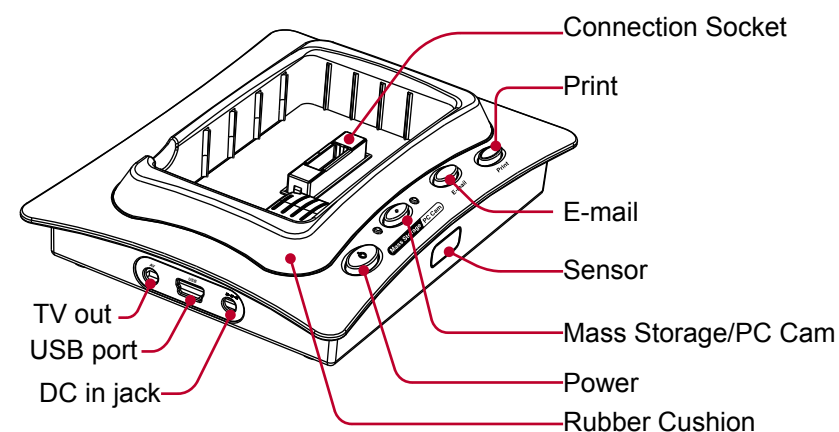
Address:

15271 Barranca Parkway,
Irvine, CA 92618

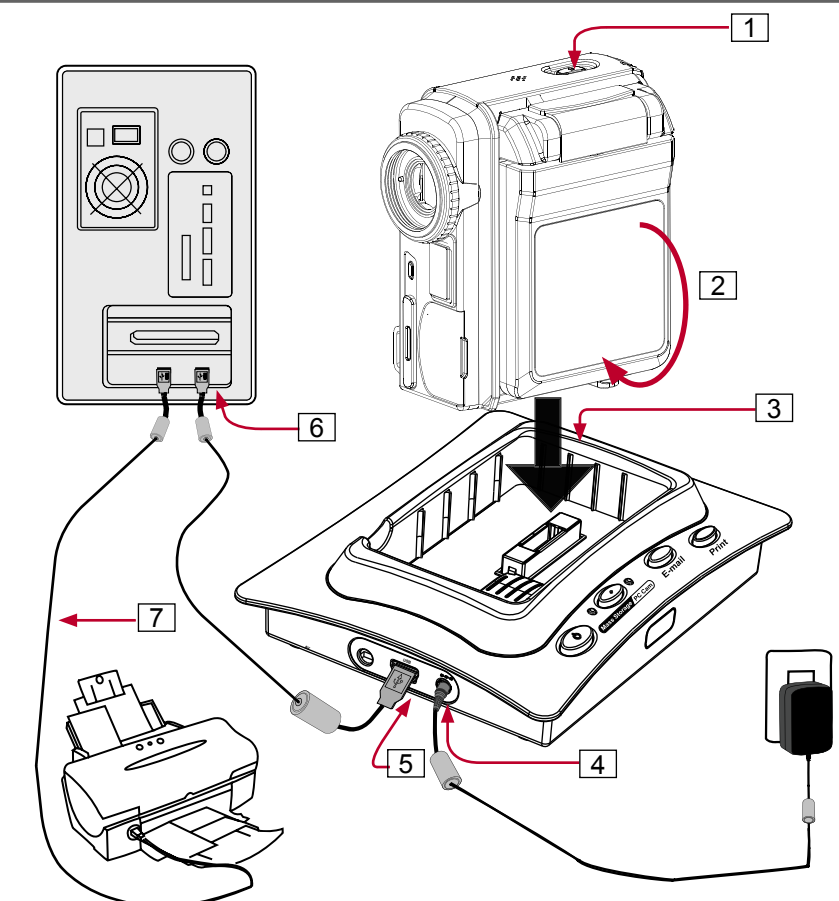
PACKAGE CONTENTS

- Remote Control
- USB Cable
- AV Cable
- Getting Started
- Power Adapter

1 Product Tour

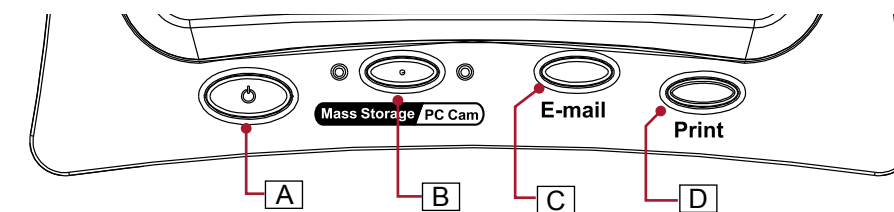


2 Attaching Your Device to Dock Station



- 1 Turn off the power on your device.
- 2 Close the LCD screen on your device.
- 3 Place the device onto the Dock Station. Be sure the rubber cushion is firmly sealed onto the Dock Station and your device is facing the correct direction and steps on the **socket** of the Dock Station.
- 4 Plug in the **power adapter** to the Dock station and connect the other end to the wall outlet.
- 5 With the device attached, connect the USB cable to the USB port on the Dock Station.
- 6 Connect the other end of USB cable to your computer.
- 7 If you are planning to print pictures via your printer later, connect your printer to your computer

3 Modes



Important: Please make sure you have already installed the device driver in the DV5500 package.

Mass Storage

- 1 Press **A** to turn on the Dock Station. The default mode is **Mass Storage**.
- 2 **MAX Console** or **Easy Transfer** will launch automatically according to your **Auto Launch Setting**.

PC Cam

- 1 Press **A** to turn on the Dock Station.
- 2 Press **B** on the Dock Station.
- 3 Your default PC Cam application will launch automatically according to your **Auto Launch Setting**.

E-mail

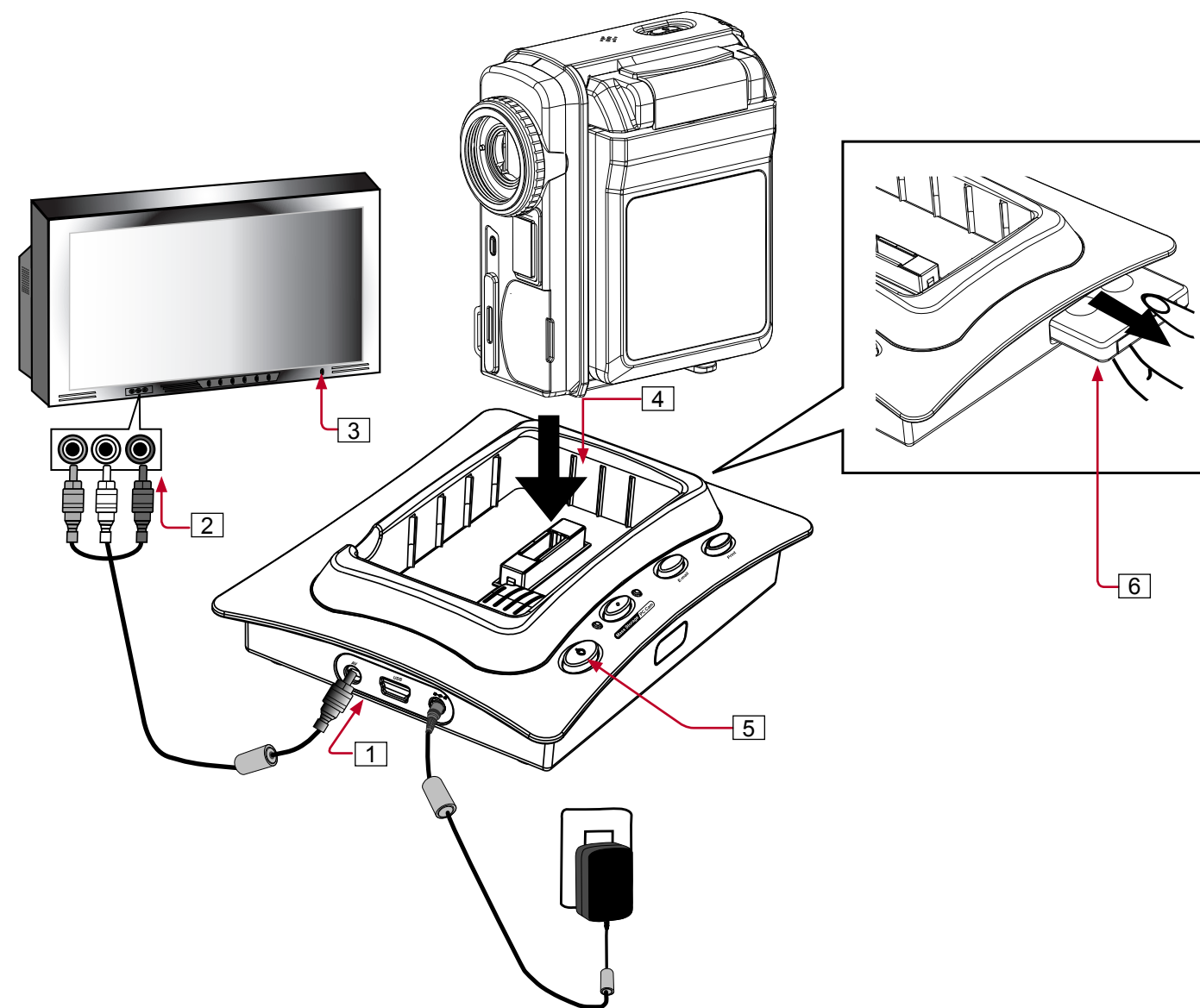
- 1 Press **A** to turn on the Dock Station.
- 2 Press **C** on the Dock Station.
- 3 A new E-mail will open up attaching the **E-mail marked files** alongside. (A warning message will appear if your total size exceeds 2 MB)

Print

- 1 Press **A** to turn on the Dock Station.
- 2 With the printer connected to your computer, turn on the printer.
- 3 Press **D** on the Dock Station. **Print marked pictures** will be printed at your printer.

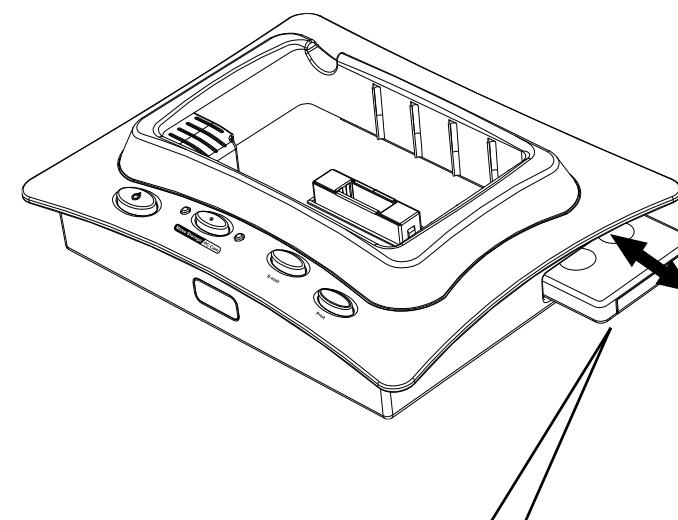
4 Playing Back Picture/Video/MP3

The Dock Station provides the option of playing back your pictures, videos, audio files and MP3 on your TV screen. Follow the instructions below to setup your TV for playback.



- 1 With the device attached, connect the AV cable to the AV jack on the Dock Station.
- 2 Connect the Audio and Video (Red, White and Yellow) connectors to your TV. For more information on AV outputs of your TV set, please refer to your TV's user guide.
- 3 **Turn on** your TV set.
- 4 Place the device onto the Dock Station.
- 5 **Turn on** the power of the Dock Station.
- 6 Retrieve the **Remote Control** from the Dock Station.
- 7 Use the Remote Control to playback video, picture and audio files in **▶** (Playback) and MP3 files in **MP3** mode.

5 Remote Control



Mode Switch: To switch between ▶ (Playback) mode or MP3 mode.		Delete: To delete all files or one file (For Both modes)	
Display: To switch screen on/off in MP3 mode and switch file display format in ▶ to thumbnail/full size or screen off. (For Both modes)		Rotate: Rotate pictures 90° closewise per rotation. Press repeatedly to rotate to your preferred angle. (For ▶ mode only)	
Stop: To stop playing a song in MP3 mode or stop playing a video, voice recording, voice recorded picture in ▶ mode. (For Both modes)		Play/Pause: To play/resume a MP3 file in MP3 mode and play/resume a video or a video file in ▶ mode. (For Both modes)	
Fast Backward: Go back to previous file selection list in both modes. Fast backward while playing a video, voice recording or MP3. (For Both modes)		Fast Forward: Skip to next file in the selection list in both modes. Fast forward while playing a video, voice recording or MP3. (For Both modes)	
Search: Play the first 10 seconds of all MP3 files in MP3 mode and 5 seconds for video & voice recordings in ▶ mode. (For Both modes)		Auto Play: Play pictures in slide show. (For ▶ mode only)	
Volume Control: Decrease volume while playing MP3, video or voice. (For Both modes)		Volume Control: Increase volume while playing MP3, video or voice. (For Both modes)	

DVC-RC1